




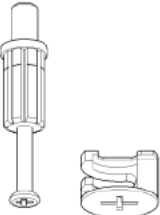


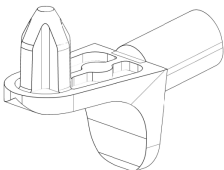
ASSEMBLY INSTRUCTION

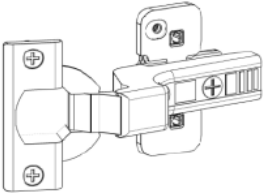
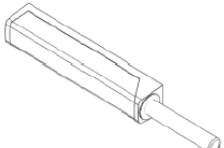
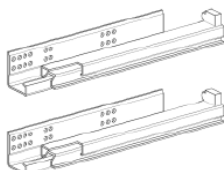
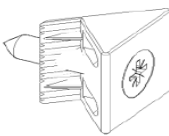
SHELVES

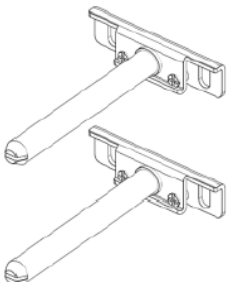
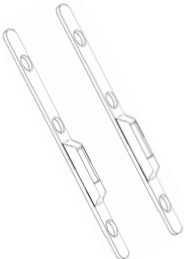
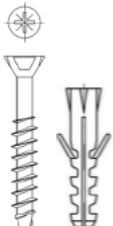
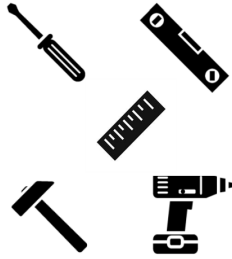
Set-Up	28
Basic Construction Step (1-2)	29
Basic Construction Step (3-6)	30
Basic Construction Step (3-6), Optional Leveller (9), Back Panel (10)	31
Optional Doors (11-13), Optional Drawers (14)	32
Mounting Handles (15-17) // Drawers (18)	33
Drawers (19) //Adjusting Drawers (20-22)	34
Optional Flaps (23-25)	35
Wall Shelves - Suspension (22, 23)	36
Wall Cubes - Suspension	37
Single Shelves - Suspension	38

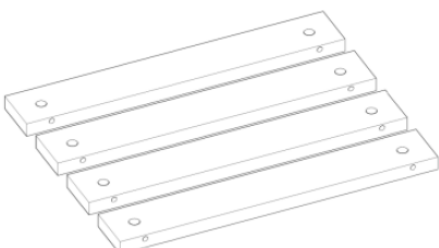
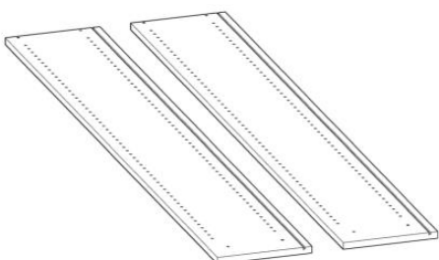
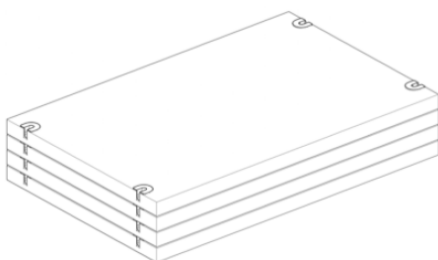
Set-Up

Arrange the different furniture parts and the small pieces. Acquire the required tools.

				
Shelf, top panel and bottom panel connector	Eccentric connector	Screws	Wooden dowel	Shelf clip for hole strips

			
Door hinge	Push-To-Open - Mechanism	Drawer guide rails	Back panel elbow

			
Wall shelf bracket	Suspension fitting for floating shelf	Screw, Anchor	Tools

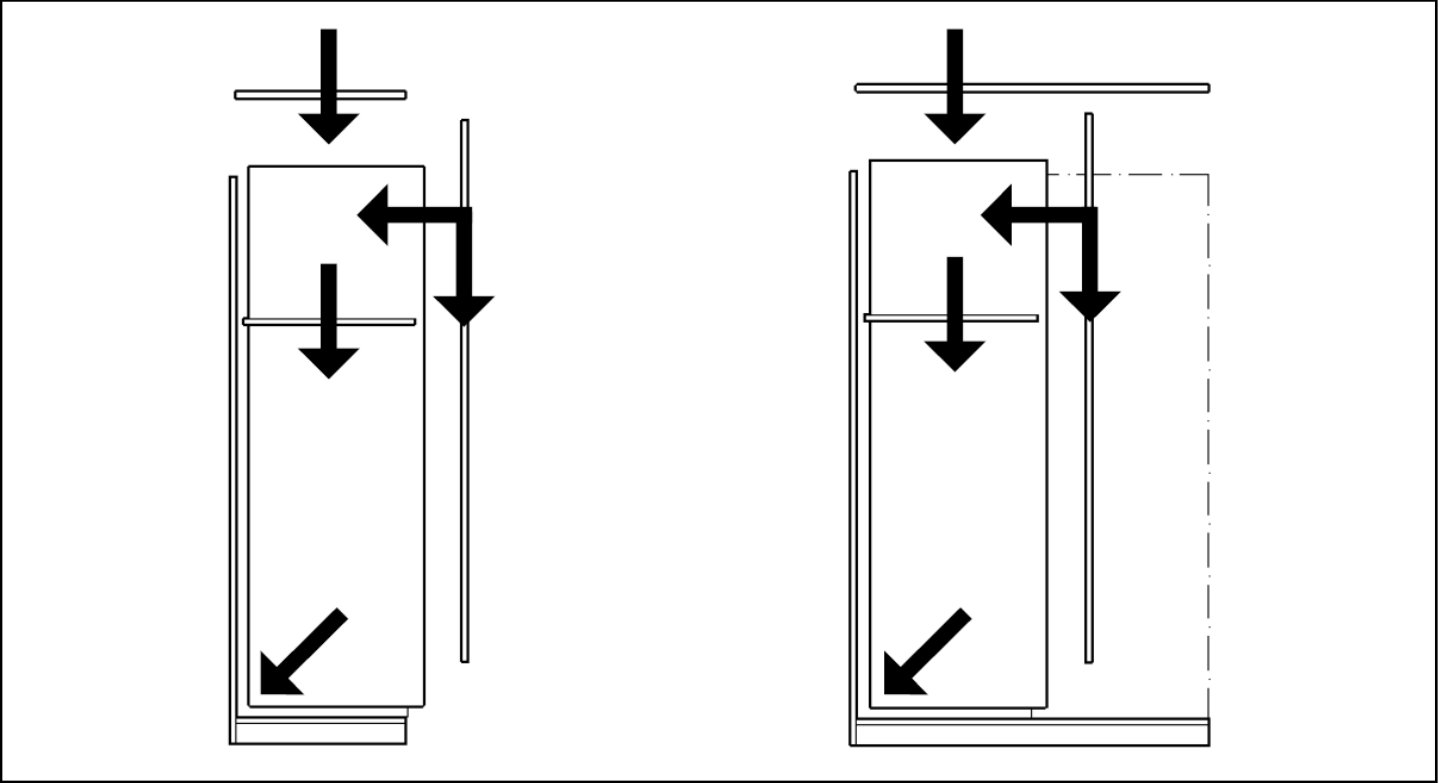
		
--	--	---

- Sort through the individual components of your particular model. For example base, sides, bottom



Depending on your order, your delivery might not include all the pieces depicted above.

Basic Construction Step (1-2)



Basic construction scheme

Place bottom panel → fasten the side panel → place the back panel → fasten the middle or side panel → install shelves or top panel

Step 1: Only concerns furniture in excess length

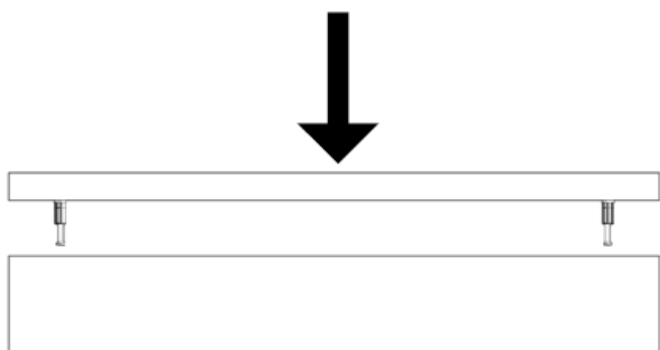
Push the components together and fix them with the eccentric connectors.

Step 2: Preparation

Prepare the furniture parts for assembly. Place the provided connectors into the side panels and shelves.

Basic Construction Step (3-6)

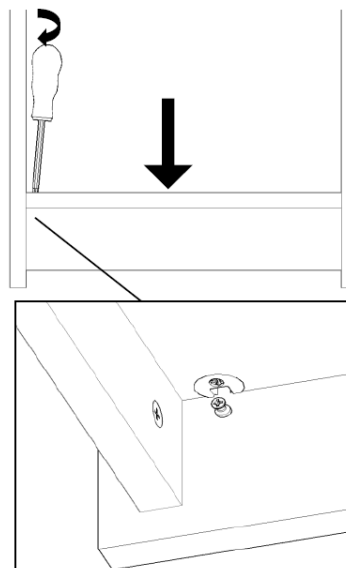
Step 3: Connecting the base



Use eccentric connectors to mount the base to the bottom panel.

Step 4: Placing the bottom panel

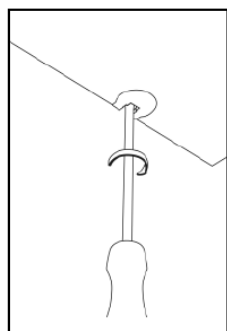
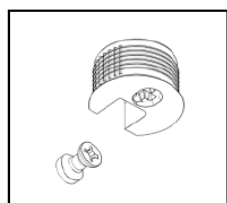
ATTENTION: Turn screws in the bottom board counterclockwise.



Place the bottom panel and the base between the side panels and fasten them with half a turn in a counter-clockwise direction (CCW) from above.

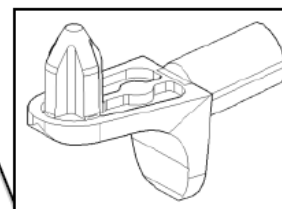
*Note: Keep in mind to insert the back panel during the assembly process (according to page 3).

Step 5: Inserting the shelves



The shelves should be inserted one at a time and secured with half a turn in a clockwise direction (CW) of the connector. (Screwdriver)

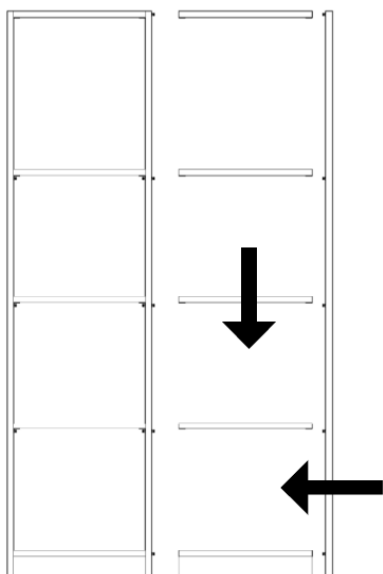
Step 6: Shelves + Hole Strips



If the side panels have provided hole strips, simply insert the shelf clips at the desired height and place the shelves on top. Fasten the shelves, just like in step 5.

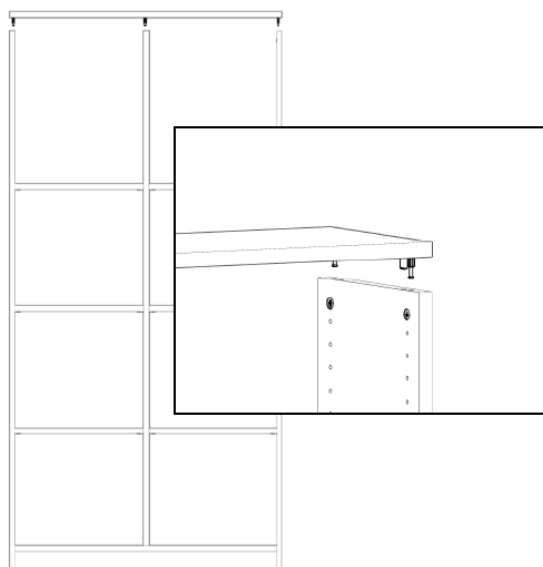
Basic Construction Step (3-6), Optional Leveller (9), Back Panel (10)

Step 7: Assembly of additional shelves/compartments



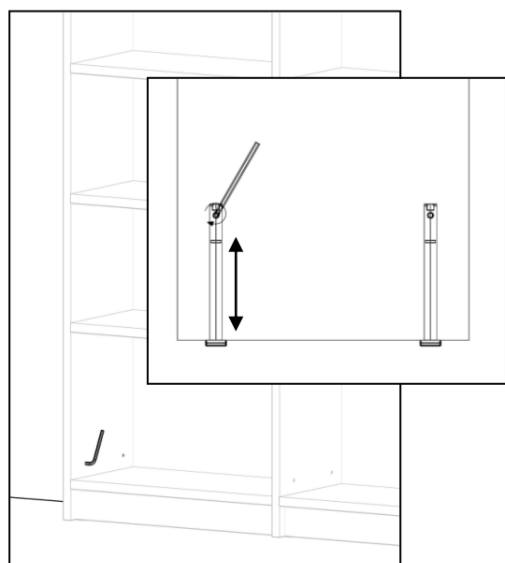
See steps: 2-5 (and 6 if applicable)
Back Panel: Keep in mind to insert the back panel, before fixing the last side panel! (see p.3)

Step 8: Note: For continuous top and bottom panels



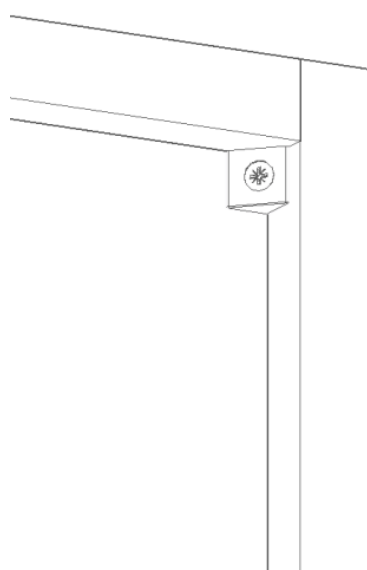
These are attached using eccentric connectors. Shelves are installed as described in steps 5 and 6.

Step 9: Furniture adjustment



Pieces of furniture can be adjusted using an Allen key and spirit level. **Note:** If the floor is extremely slanted, make adjustments little by little!

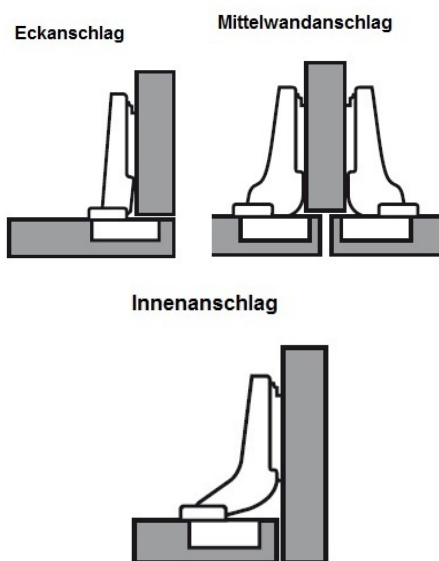
Step 10: Fasten back panel



Place the back panel elbows in the groove and fix them with the screwdriver. **Note:** for built-in furniture, the connectors can be fixed at the front side of the shelf (inside the compartments)!

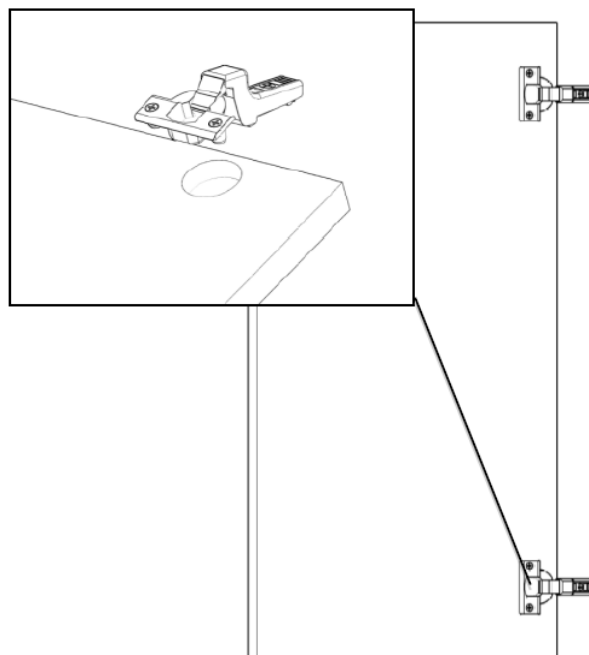
Optional Doors (11-13), Optional Drawers (14)

Step 11: Assemble doors



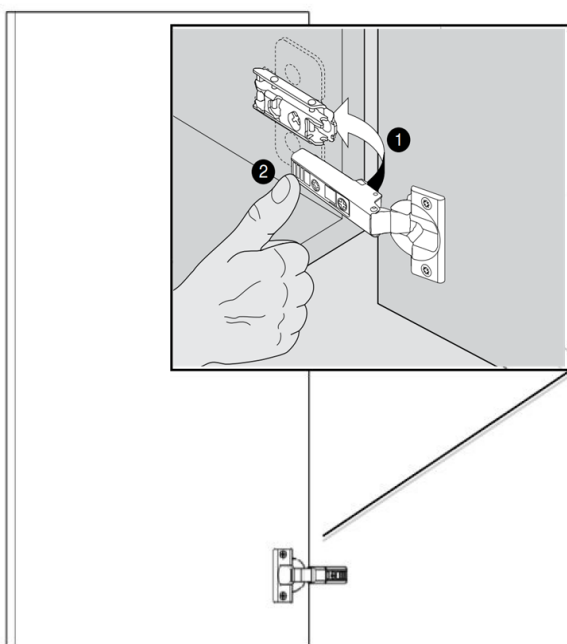
When assigning the hinges, note the hinge type of the respective door!
The hinges differ here in their bending.

Step 12: Installing the doors



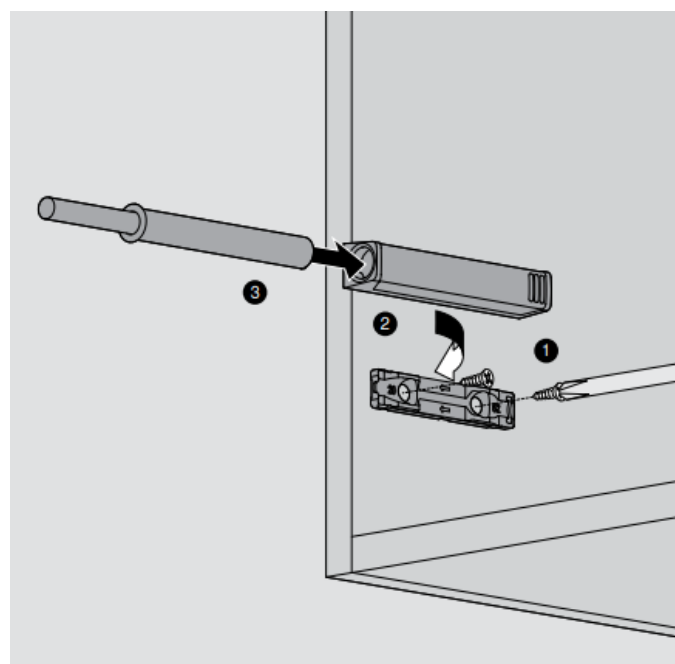
Screw the door hinges on at the top and bottom of the doors

Step 13: Snap in the door hinges



Attach the adapter plate to the side panel and snap in the door hinge.

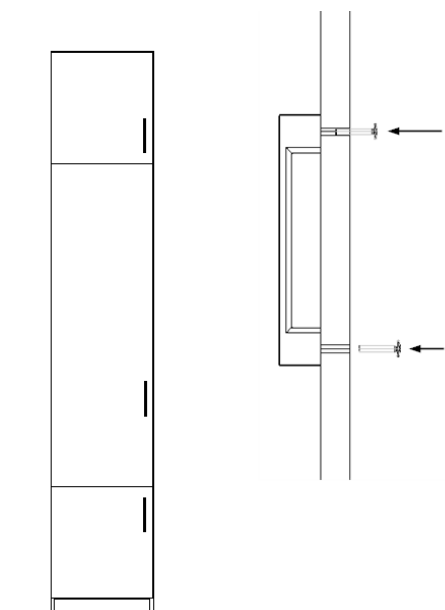
Step 14: Mount the door opener



Attach the adapter plate, use the pre-drilled holes provided for this purpose (pay attention to the arrows), clip on the TipOn. By turning the cylinder, you can adjust the depth of the TipOn cylinder.

Mounting Handles (15-17) // Drawers (18)

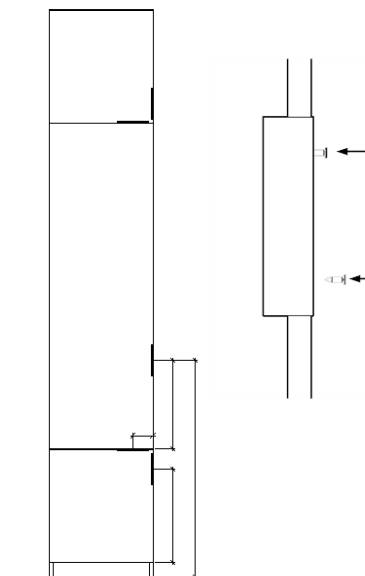
Step 15: Handles



Attach the handles to the doors through the pre-drilled holes using the enclosed M4 screws.

Note: Handles for glass doors require a shorter version of the screws.

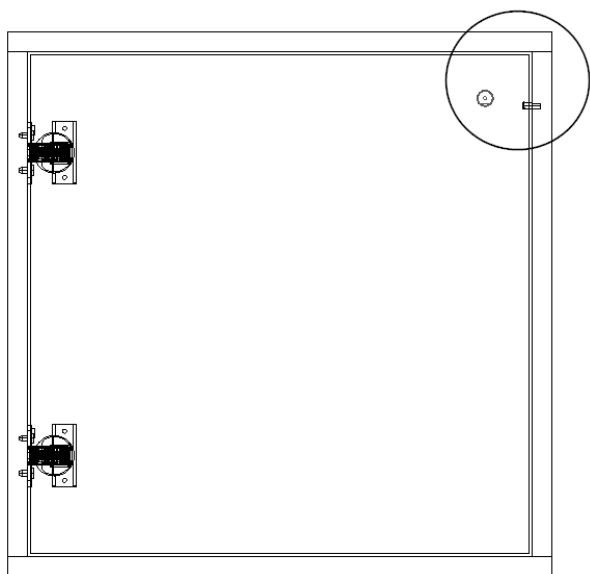
Step 16: Profile Handles



Determine the perfect position of the handles and screw them on the back with the enclosed screws.

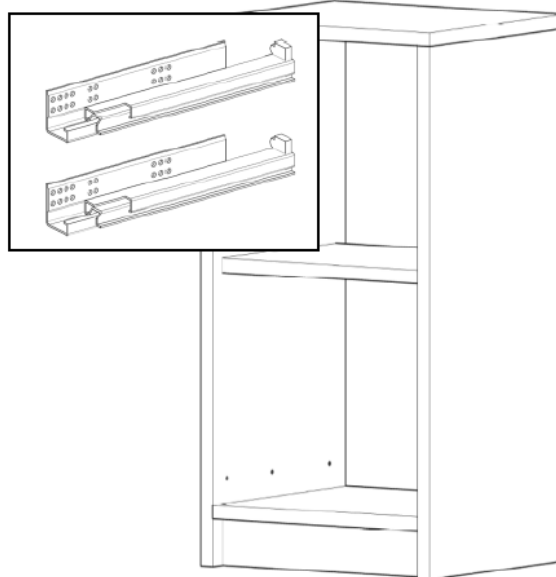
Note: The handles can also be mounted horizontally!

Step 17: Bump Stop



Bumpers are included with interior doors with a handle. Press them into the pre-drilled holes on the side. **Note:** for hinged doors, the bumpers are fitted at the bottom edge of the door.

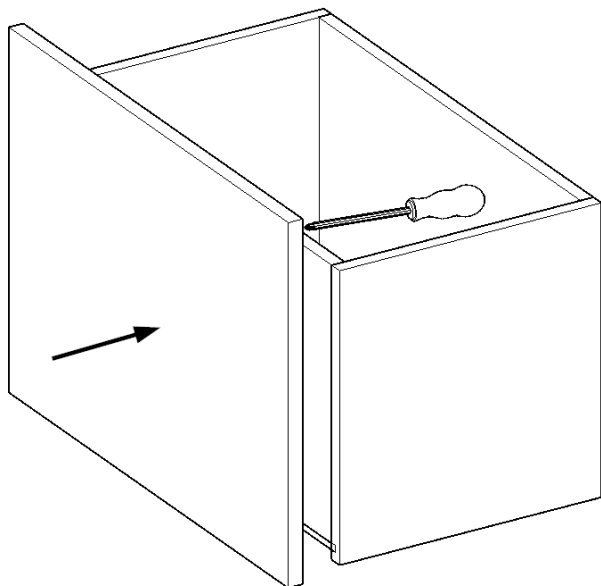
Step 18: Attach drawers



Fix the drawer runners to both side panels using the top holes of the drawer runner. Position the runner so that it is fixed as far forward as possible to match the pilot holes.

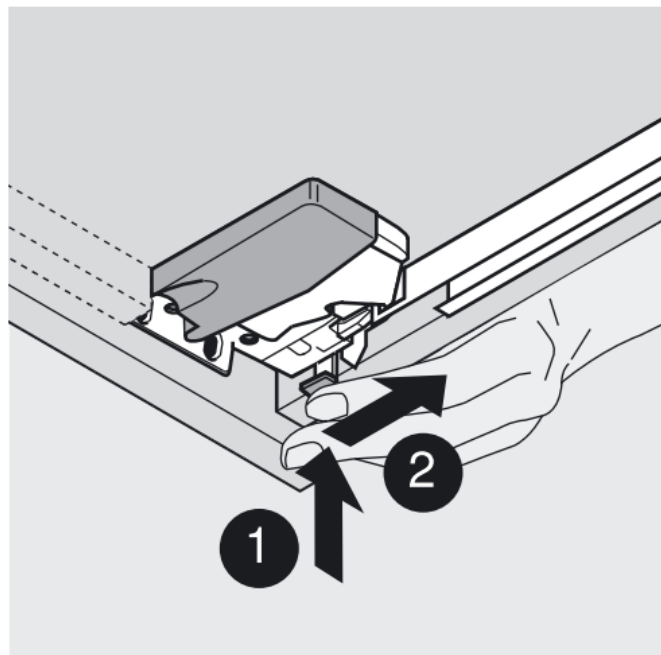
Drawers (19) // Adjusting Drawers (20-22)

Step 19: Attaching the front



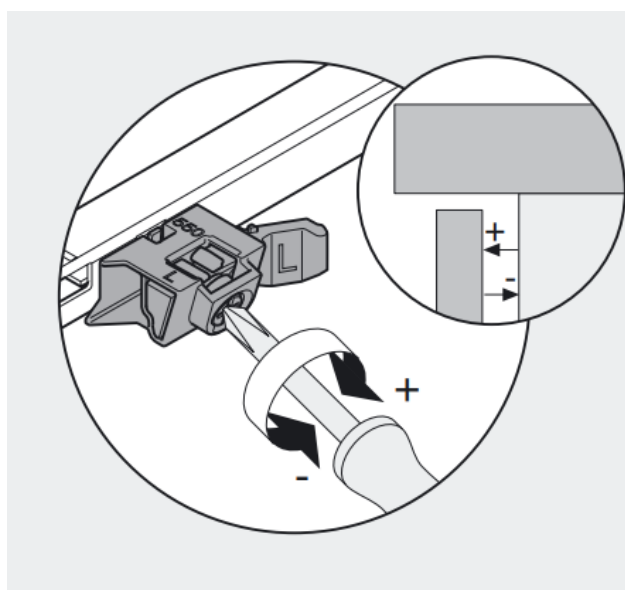
Connect the drawer fronts to the drawer using screws at the marked points. Then insert the drawers.

Step 20: Height Adjustment



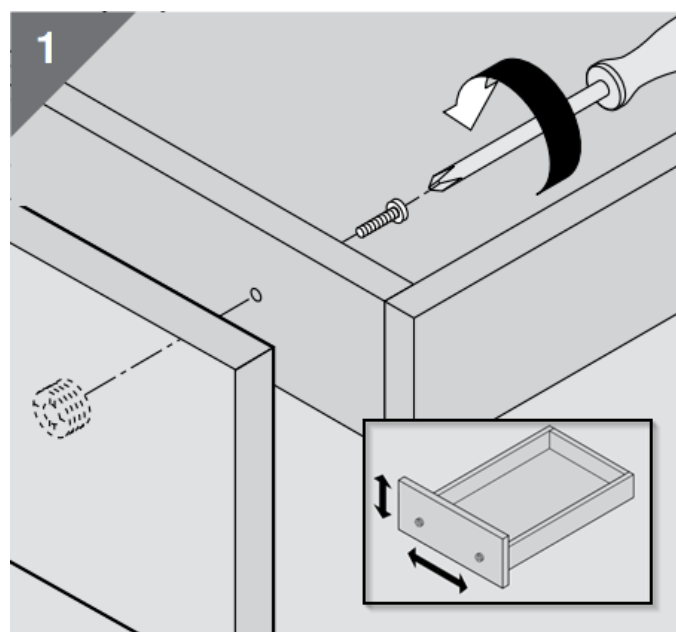
The tool-free height adjustment option guarantees a consistent drawer joint front and allows a height compensation up to 3 mm.

Step 21: Depth Adjustment



To adjust the depth of your drawer front the TipOn-mechanism is used.

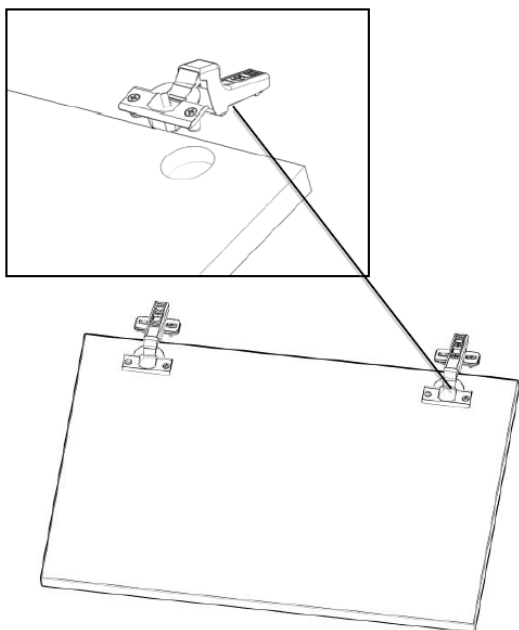
Step 22: Front Adjustment



Loosen the screws on the drawer front by using a screwdriver, readjust the position of the front and fasten screws.

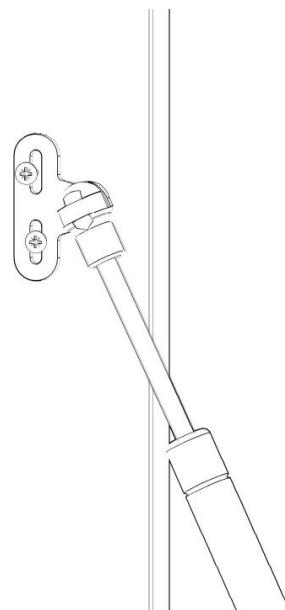
Optional Flaps (23-25)

Step 23: Install Flaps



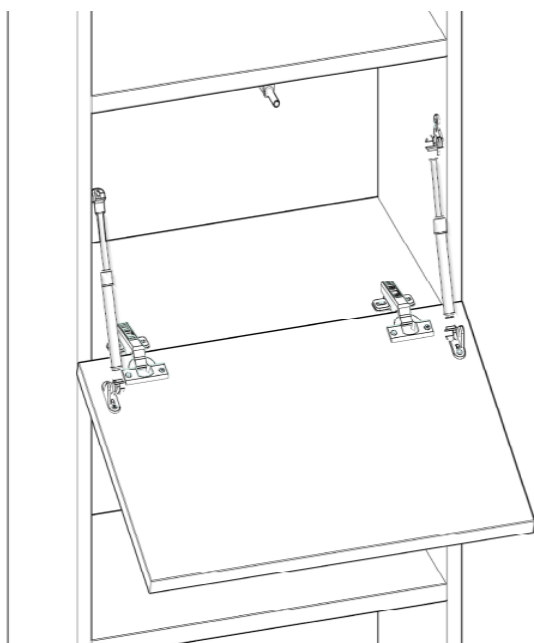
Screw door hinges to the flap and adapter plate to the shelf.

Step 24: Mounting the damper/lift



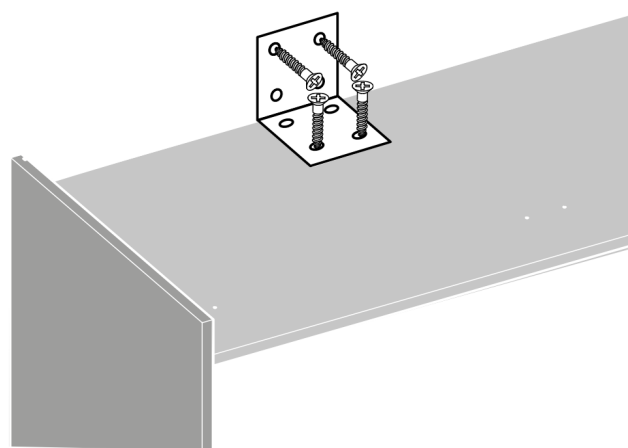
Screw the damper/lift to the side panel. Adjust by means of the oblong holes.

Step 25: Fixing the flaps



Snap the door hinge to the adapter plate and screw damper/lift to the flap.

Step 26: Tilt Lock

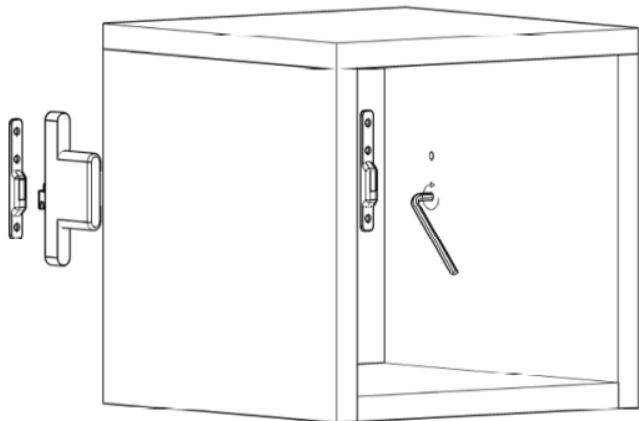


From a certain size, all furniture should be firmly screwed to the wall to maintain stability.

***Flaps can be planned to open upwards or downwards. The mounting procedure remains the same.**

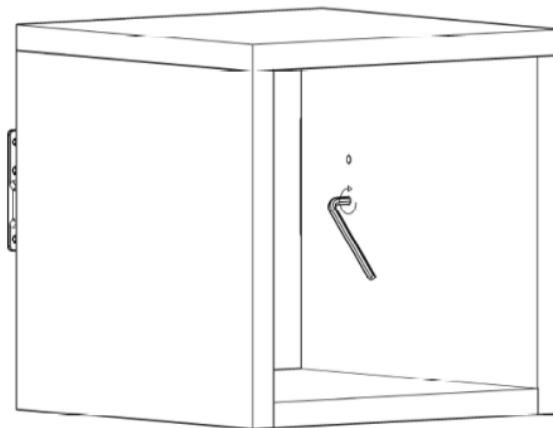
Wall Shelves - Suspension (22, 23)

Step 22: Installing the suspension device



Place the adapter plate on the wall. Turn the **lower** hook of the suspension device outward using an Allen key. Place on the adapter plate and fasten using the **lower** hook.

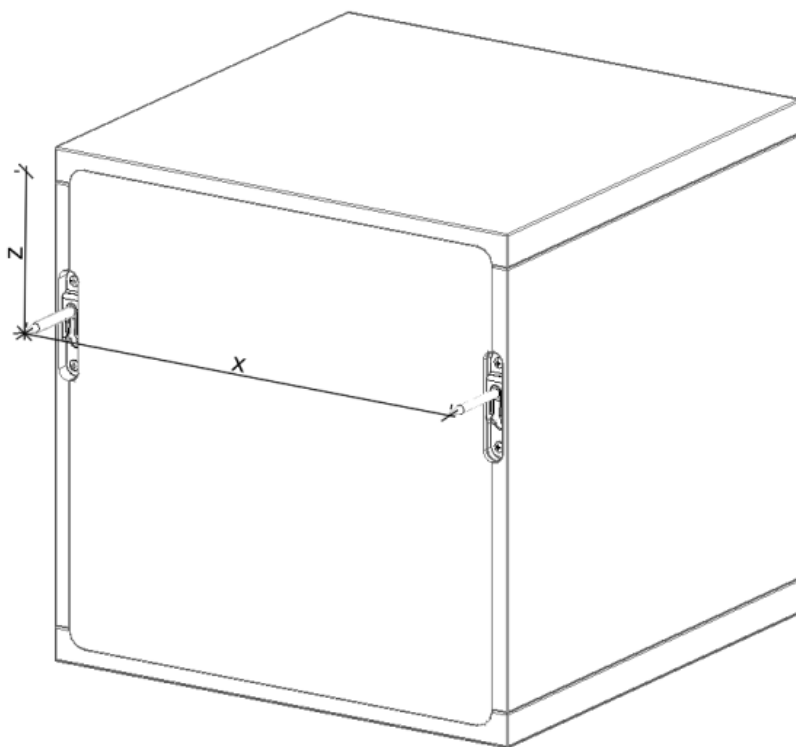
Step 23: Adjustment



Adjust the position of the shelf using an Allen key on the **upper** hook.

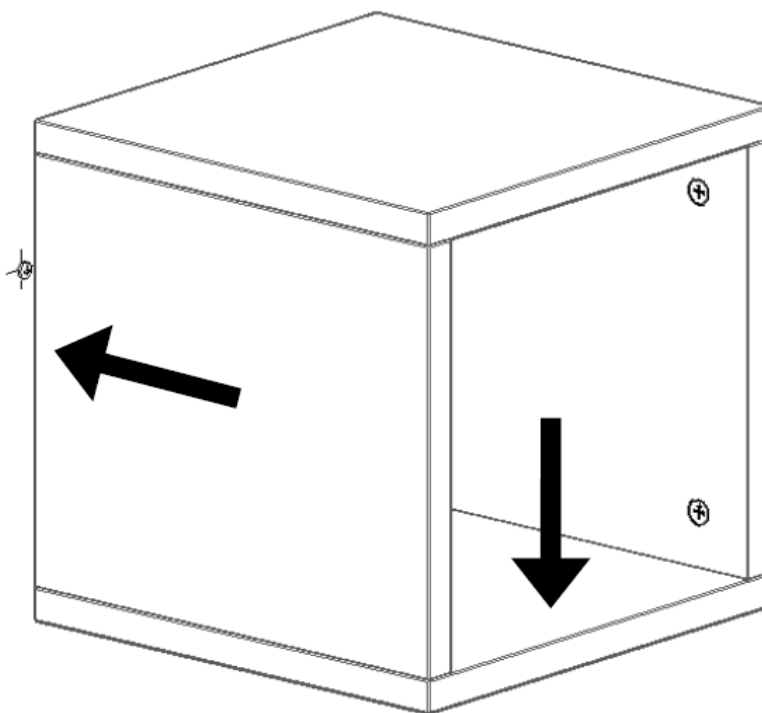
Wall Cubes - Suspension

Installing the suspension device



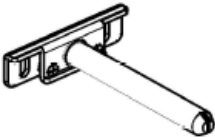
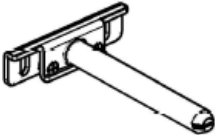
First, measure the cube, transfer dimensions to the wall, drill holes, fix dowels and screws.

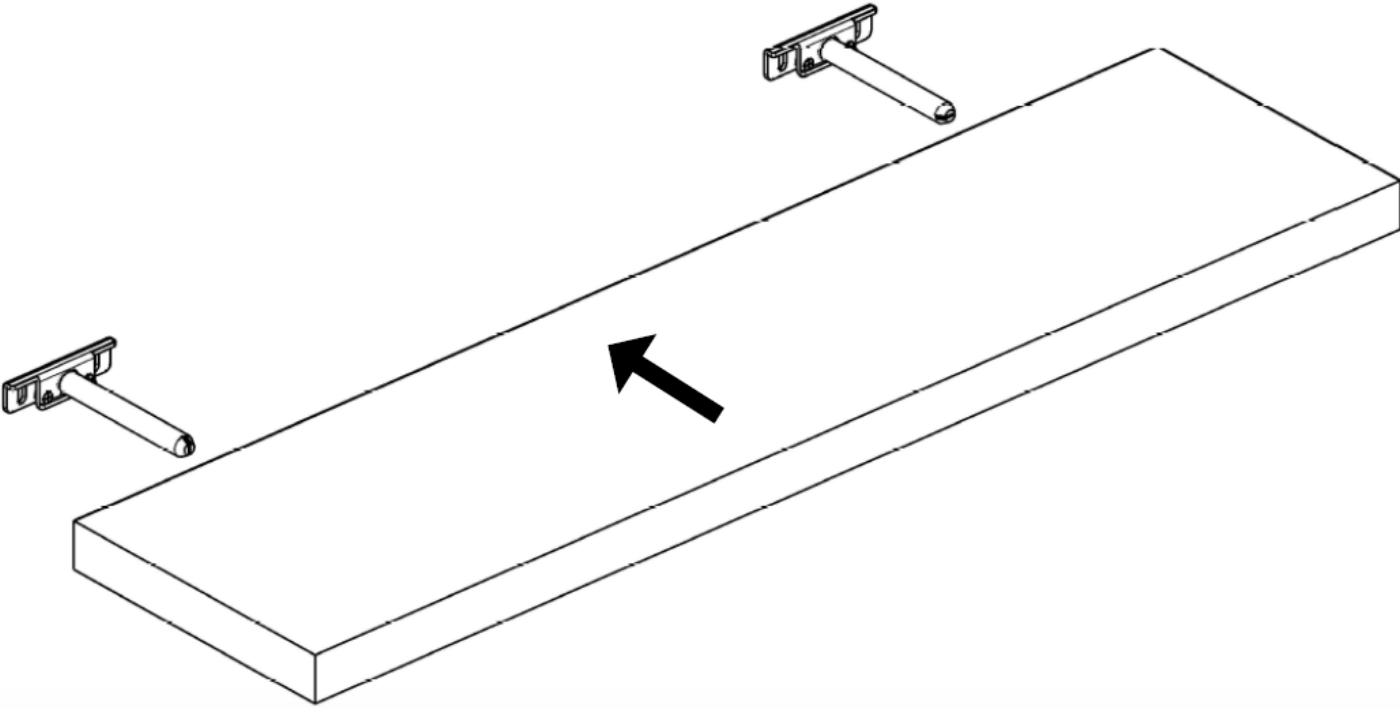
Adjustment



Place the cube on the screws and pull it down.

Single Shelves - Suspension

Installing the brackets	
	
Place the wall shelf brackets in the desired position on the wall and fasten them.	

Adjustment	
	
Incline the suspension device using the two screws on the brackets and place the shelf on top.	

Please do not hesitate to get in touch via e-mail
at info@pickawood.com.

Our special furniture consultants are more than
happy to help you!



Rödingsmarkt 20, 20459 Hamburg

Mail: info@pickawood.com

Web: www.pickawood.com